



**Science Worksheet-1**

Candidate Name: .....

Total Marks: 15

Grade: VI

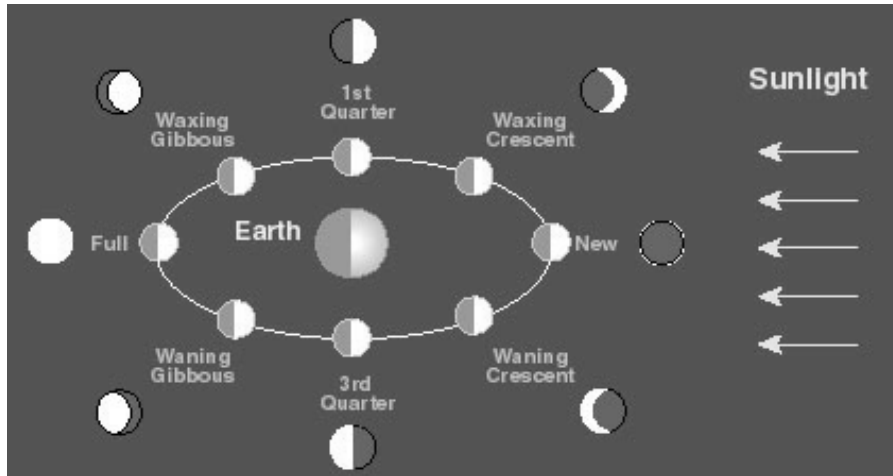
Marks obtained: .....

Time: (.....)

Teacher's Signature: .....

1a) Based on the diagram state when new moon occurs

[1+1]



.....  
.....

b) State when full moon occurs

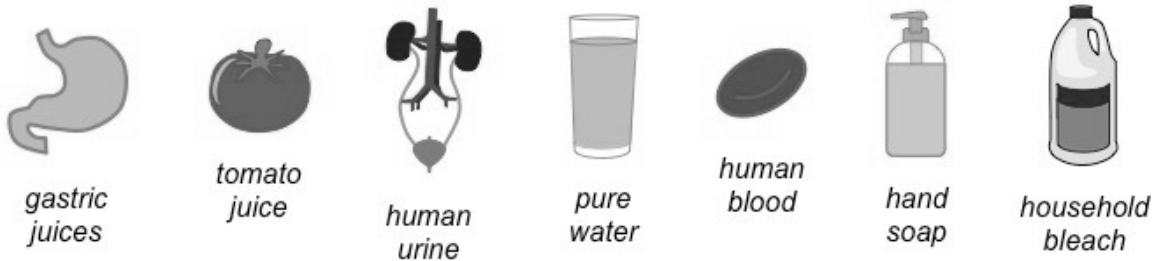
.....  
.....

2) What does the ph scale measures?

[1]

.....  
.....

3)



State which of these are acidic, neutral or alkaline in nature..... [3]

.....  
.....

4a) What are the features of amphibians state with few examples. [2]

.....  
.....

b) State what are invertebrates? Mention all the groups of invertebrates. [2]

.....  
.....

c) State the examples of Myriapods. [2]

.....  
.....

5) Describe ways in which decay by a micro-organism is useful. [2]

.....  
.....

6) A group of similar cells is called a ..... [1]



## Science Worksheet-2

Candidate Name: .....

Total Marks: 15

Grade: VI

Marks obtained: .....

Time: (.....)

Teacher's Signature: .....

1) What was the idea behind geocentric model?

[2]

.....  
.....  
.....

2) What does heliocentric model state?

[1]

.....  
.....  
.....

3) Describe biotic weathering.

[1]

.....  
.....  
.....



4)a) What is the pH of a neutral solution?

[1]

.....

b) What range of pH do strong alkalis have?

[1]

.....  
.....

5a) Vertebrates are classified into how many categories?

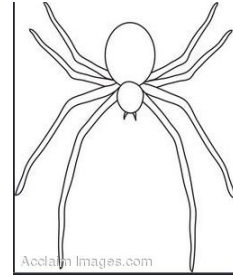
[2]

.....

.....  
b) State the features of arachnids

[2]

.....  
.....  
.....  
.....



6) State the names of groups of micro-organisms. State features of any one.

[3]

.....  
.....  
.....  
.....

7a) What part in animal cell control cell activities

[1+1]

.....

b) Which part of cell controls what enters and leave the cell.....

.....